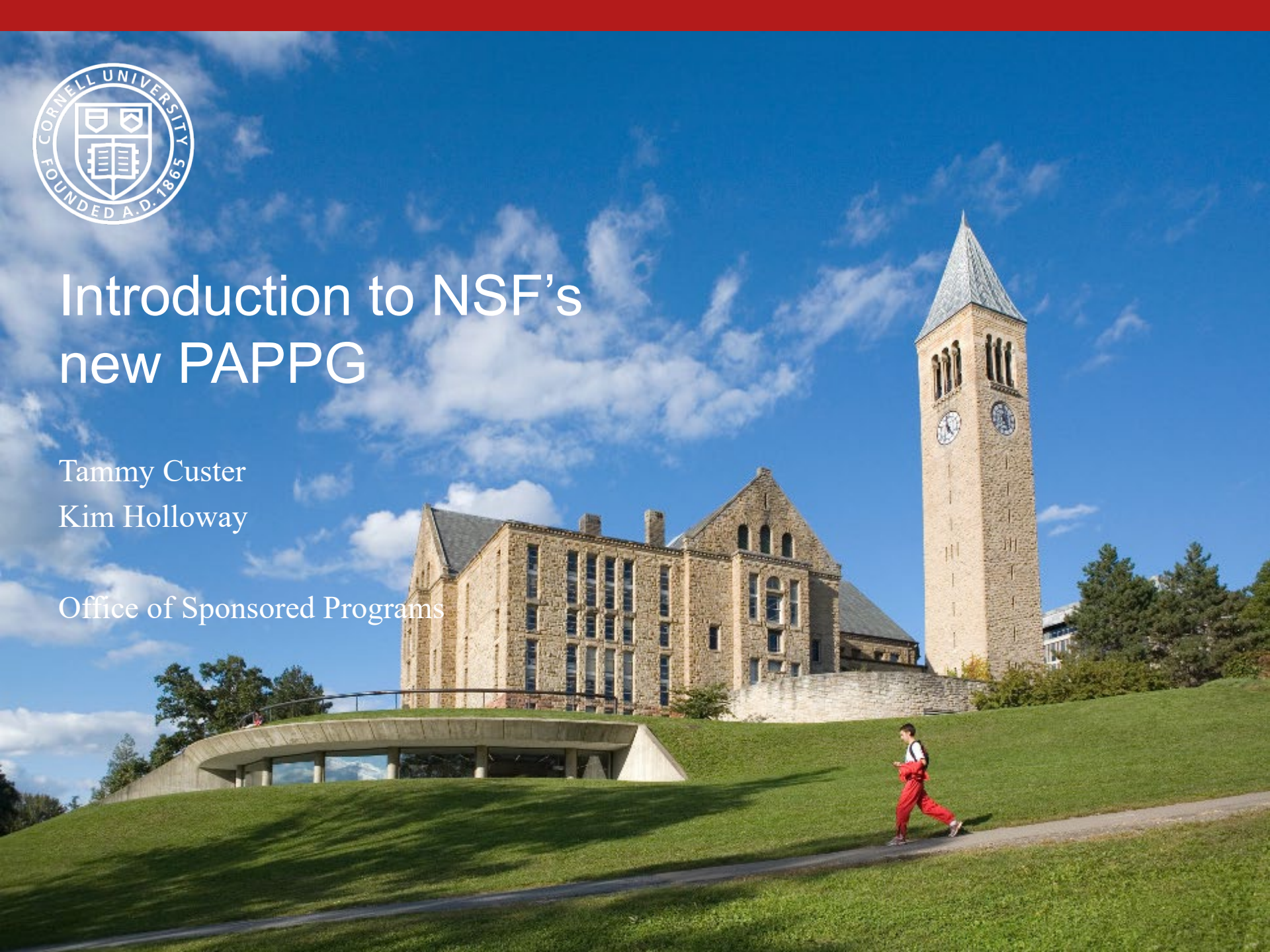


Introduction to NSF's new PAPPG

Tammy Custer

Kim Holloway

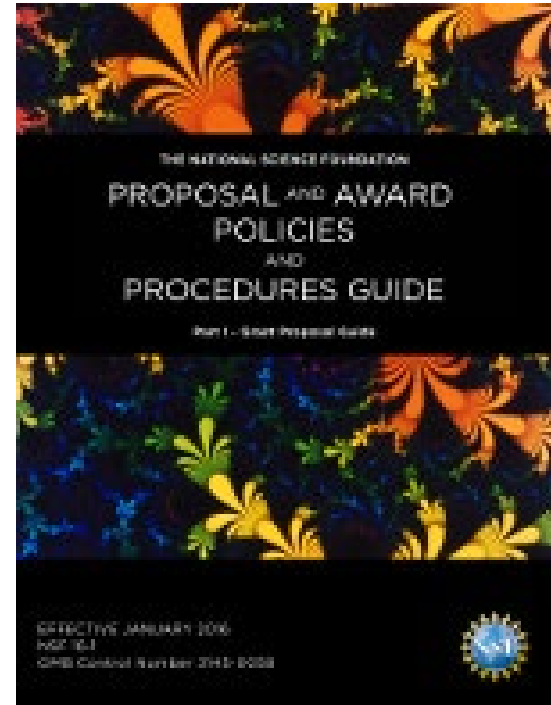
Office of Sponsored Programs





New PAPPG released
October 15th 2015

Effective January 25th 2016





Most Significant Change:

5pm local submitter's time will be the cut off for ALL proposals submitted, regardless of the wishes of the individual program



5:00:00



5:00:01





Use of “should” and “must”

The use of “should” and “must” have been revised throughout the PAPPG.

Should is voluntary, must means **MUST**.



Single Copy Documents

Collaborators and co-Editors information previously in the Biosketch has been moved to the single copy documents

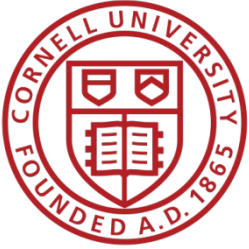
No page limitations

Must be separately provided for all project personnel



Suggested Reviewers

Any suggested reviewers must have their email addresses and institutional affiliation listed



Cover Sheet

New box has been added to the cover page to indicate any Dual Use Research Concerns

Avian influenza virus (highly pathogenic)

Bacillus anthracis

Botulinum neurotoxin (no exempt quantities)

Burkholderia mallei

Burkholderia pseudomallei

Ebola virus

Foot-and-mouth disease virus

Francisella tularensis

Marburg virus

Reconstructed 1918 Influenza virus

Rinderpest virus

Toxin-producing strains of Clostridium botulinum

Variola major virus

Variola minor virus

Yersinia pestis



Cover Sheet

For unknown conference destinations, select
“Worldwide” from the drop down menu for
International Activities



Cover Sheet

If no IACUC protocol is approved at the time of submission, proposers **MUST** write “pending” under the animal use section of the cover sheet



Project Summary

Language strengthened to indicate that the project summary may **ONLY** be uploaded as a supplementary document if it has special characters

We see many uploaded as supplementary documents that do not contain special characters

Special characters list is included in FastLane



Project Description

Language strengthened to specify that URLs should not be included in the project description

URLs can be cited and included in the reference list

- We get many proposals for review that contain URLs
- We have had proposals returned for containing URLs



Results from Prior NSF Support

Language clarifying the expectations behind when a PI or co-PI should list Prior NSF Support

- with a start date in the past 5 years
- inclusive of current funding AND no cost extensions
- regardless of whether salary was supported or not
- regardless of whether the award is relevant to the current proposal
- clarifies which awards are subject to being included in prior support



Letters of Collaboration

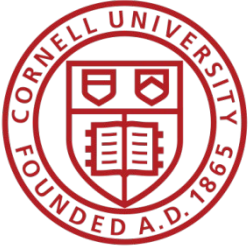
A sample template for letters of collaboration is now included in the Special Information and Supplementary Documentation of the GPG

Language clarifies the content of these letters should be the nature of the collaborations NOT to endorse the proposal or project



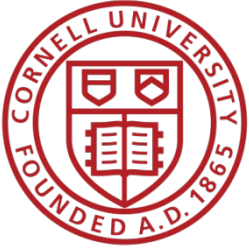
Biographical Sketches

- Third party systems can be used to generate a biosketch, but they must conform to NSF regulations
- Collaborators and other affiliations has been removed from the biosketch and will be included as a single copy document
- Each individual biosketch **MUST** be uploaded as a separate pdf file associated with that individual, not as a single pdf associated with the PI



Budget and Budget Justification

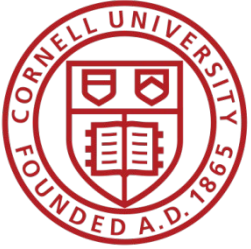
- Language added to clarify costs that can be included as participant support costs
 - Greater clarity of what costs can be included in a conference proposal budget
- Language strengthened regarding voluntary committed cost sharing being unallowed on NSF proposals
 - Voluntary uncommitted cost sharing may still be included, but should not be listed in the budget or justification



NSF Just-in-Time Pilot Project- FY2016

- MPS/DMS (Math), MPS/PHY (Physics), ENG/IIP (Industrial Innovation and Partnerships)
- Require only textual budget similar to modular NIH
 - Will put a “0” in the budget amount
- Detailed budget will be included upon award recommendation
 - Reduces administrative burden

http://www.nsf.gov/news/news_summ.jsp?cntn_id=136883&WT.mc_id=USNSF_61&WT.mc_ev=click



Current and Pending Support

- Internal support should now be included in current and pending support
- Each individual C&P document **MUST** be uploaded as a separate pdf file associated with that individual, not as a single pdf associated with the PI



Post-award changes:

-Public Access implementation, public repository

nsf.gov/news/special_reports/public_access

-Effective on awards made from proposals submitted
after January 25th 2016

-PI will deposit publications in the NSF-public access
repository

FAQs: <http://www.nsf.gov/pubs/2016/nsf16009/nsf16009.jsp>



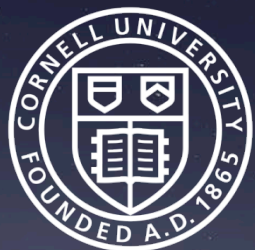
Post-award changes

-Project Outcomes Report now due 120 days after project end date, consistent with financial report



Post-award changes

- Majority of notifications and requests have migrated to research.gov as of October 2015
- Last to be transferred will be PI transfers, due to their complexity



Questions?

